

Madison, Wisconsin

CITY OF MADISON

CITY ENGINEERING DIVISION

DEPARTMENT OF PUBLIC WORKS

PLAN OF PROPOSED IMPROVEMENT

PUBLIC IMPROVEMENT PROJECT APPROVED

MARCH 15, 2016

BY THE COMMON COUNCIL
OF MADISON, WISCONSIN

PUBLIC IMPROVEMENT DESIGN
APPROVED BY:

Michael R. Dailey 5/12/2016
City Engineer Date

SANITARY SEWER
DESIGNED BY:



INDEX OF SHEETS

SHEET NO.	TITLE
1	NORTH BEDFORD STREET
U2	MATC ATHLETIC FIELDS
U3-U5	

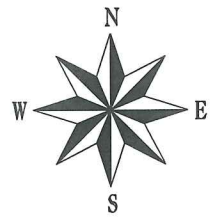
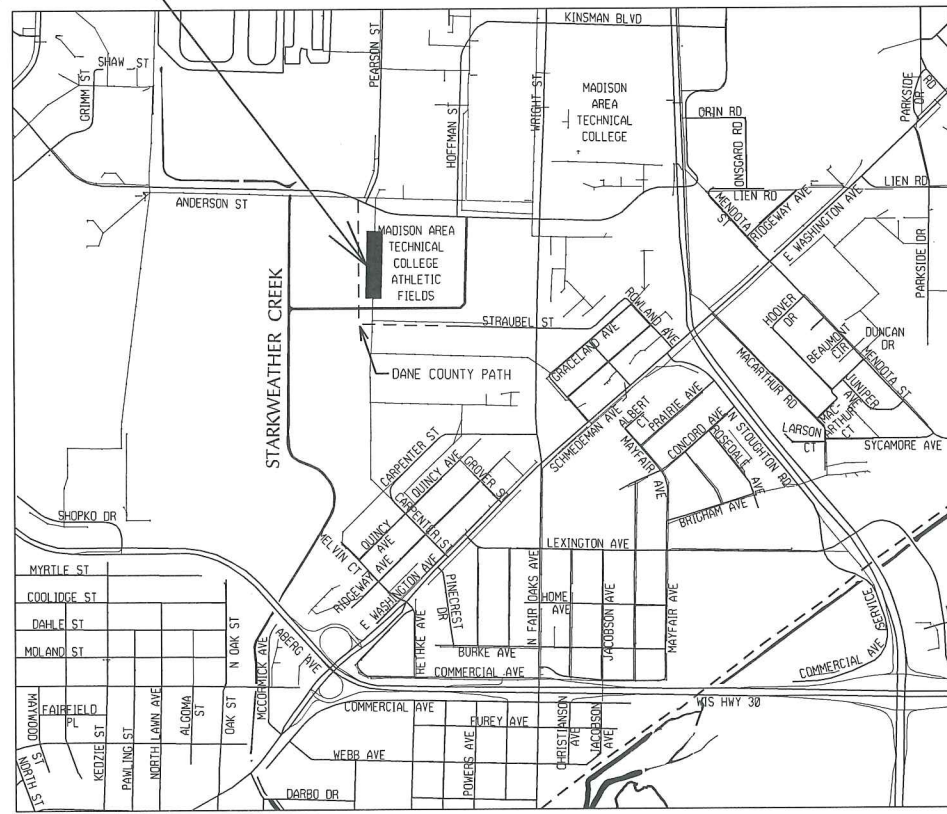
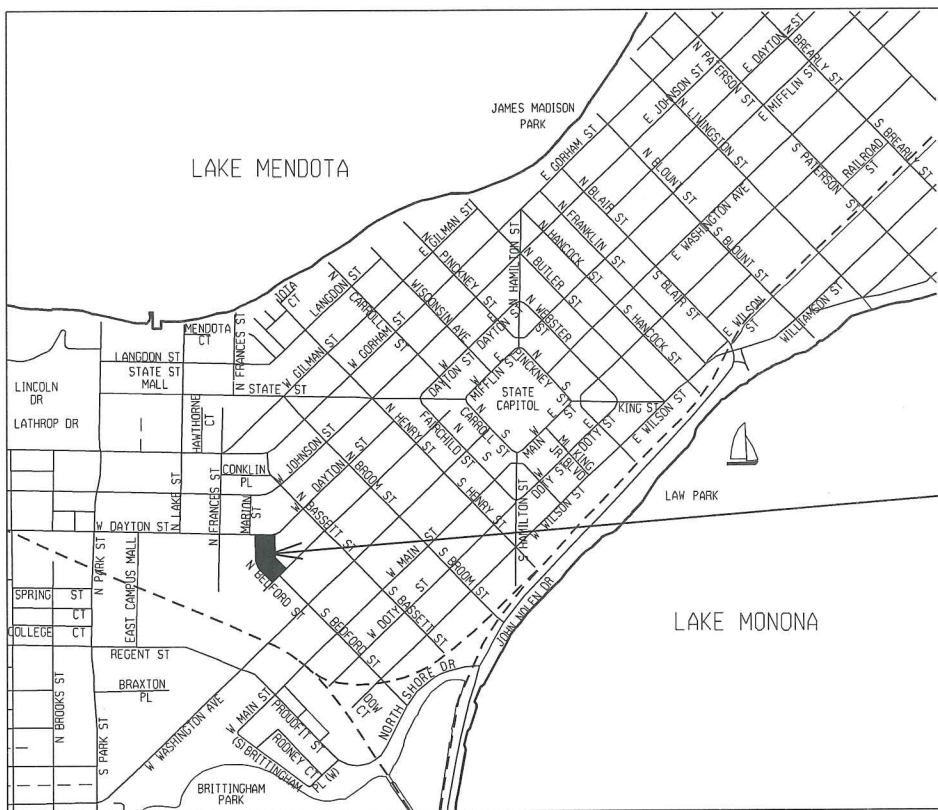
N. BEDFORD ST & MATC ATHLETIC FIELDS(PIPE BURSTING)

MUNIS# 11211
CONTRACT# 7643

CONVENTIONAL SIGNS	
FIELD VERIFY ALL UTILITY LOCATIONS	
GAS	G
STORM SEWER	ST
SANITARY SEWER	SAN
WATER	W
OVERHEAD ELECTRIC	OH
POWER POLE	□

PROJECT LOCATION

PROJECT LOCATION

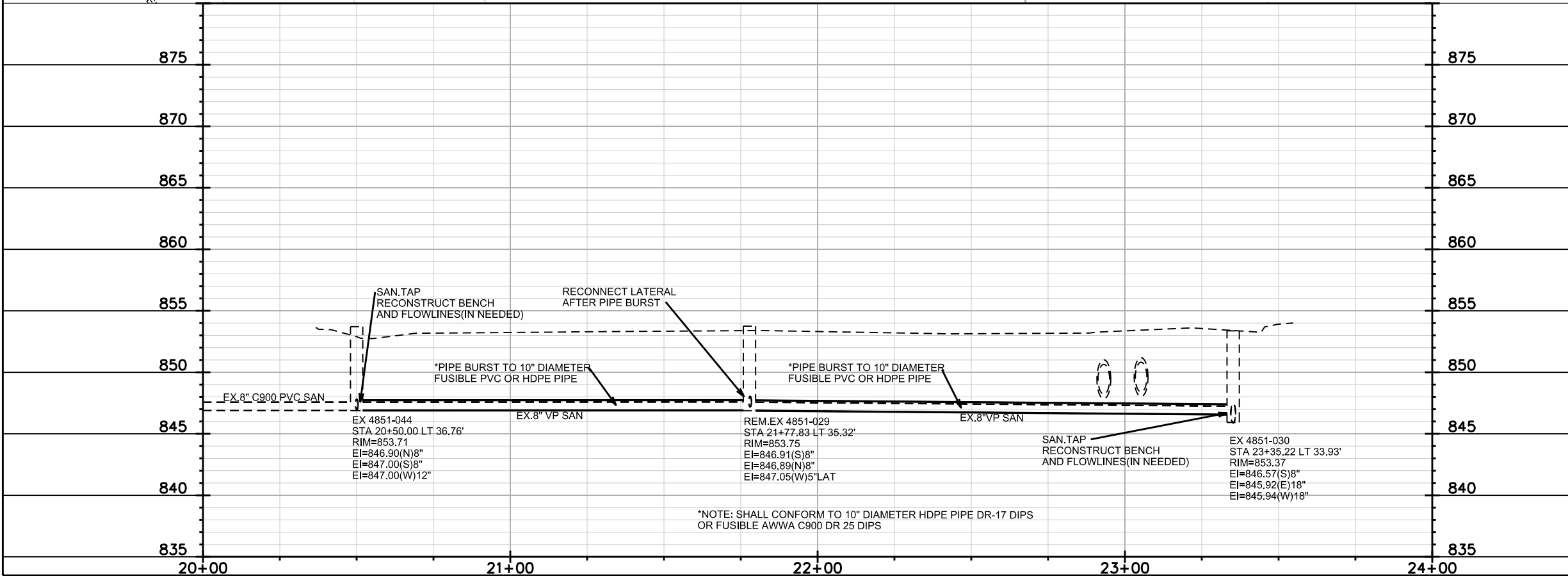
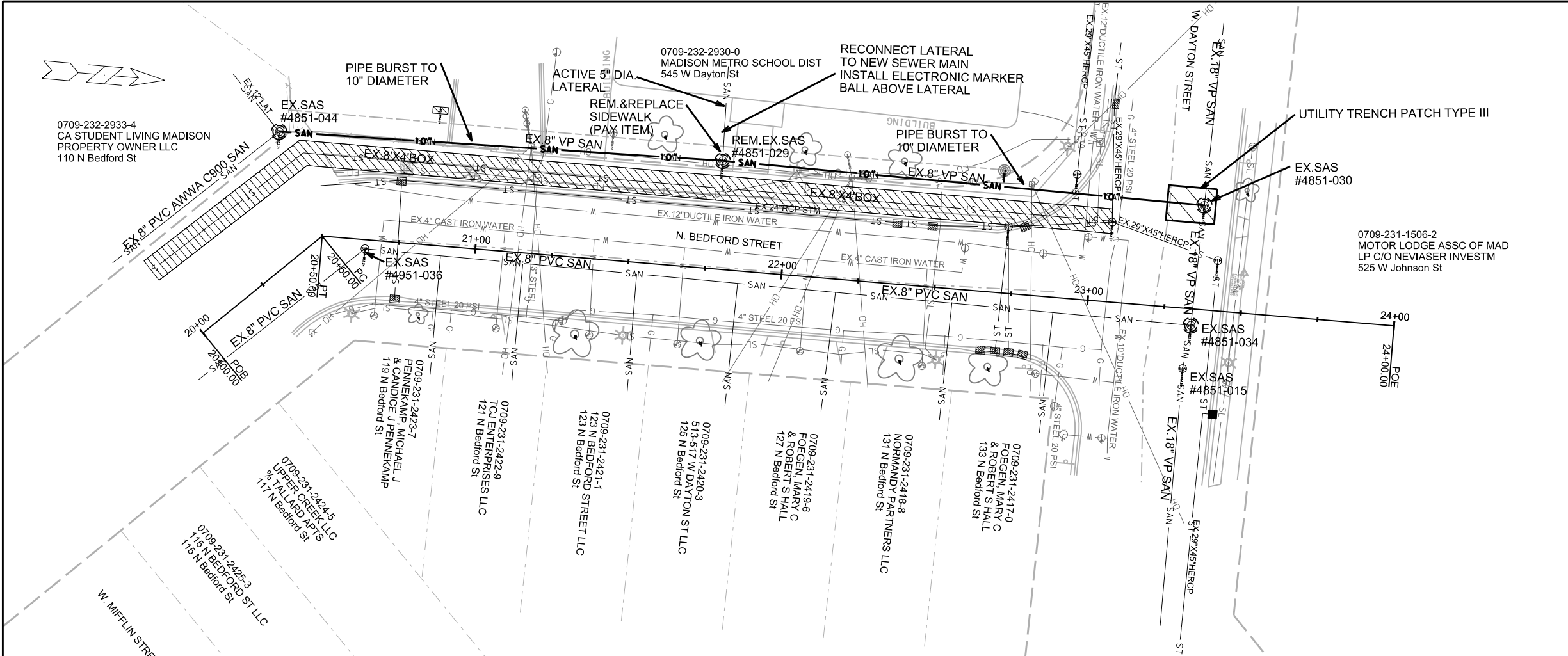


PLOT SCALE:

PLOT NAME:

REV. DATE:

ORIGINATOR: CITY OF MADISON, STREETS DIVISION



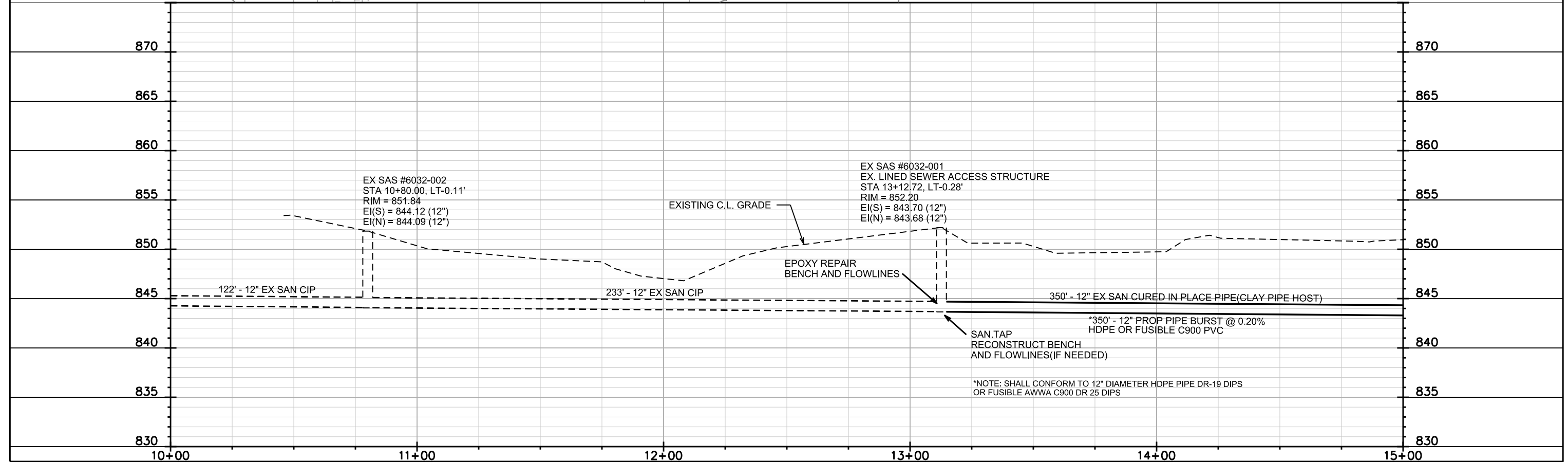
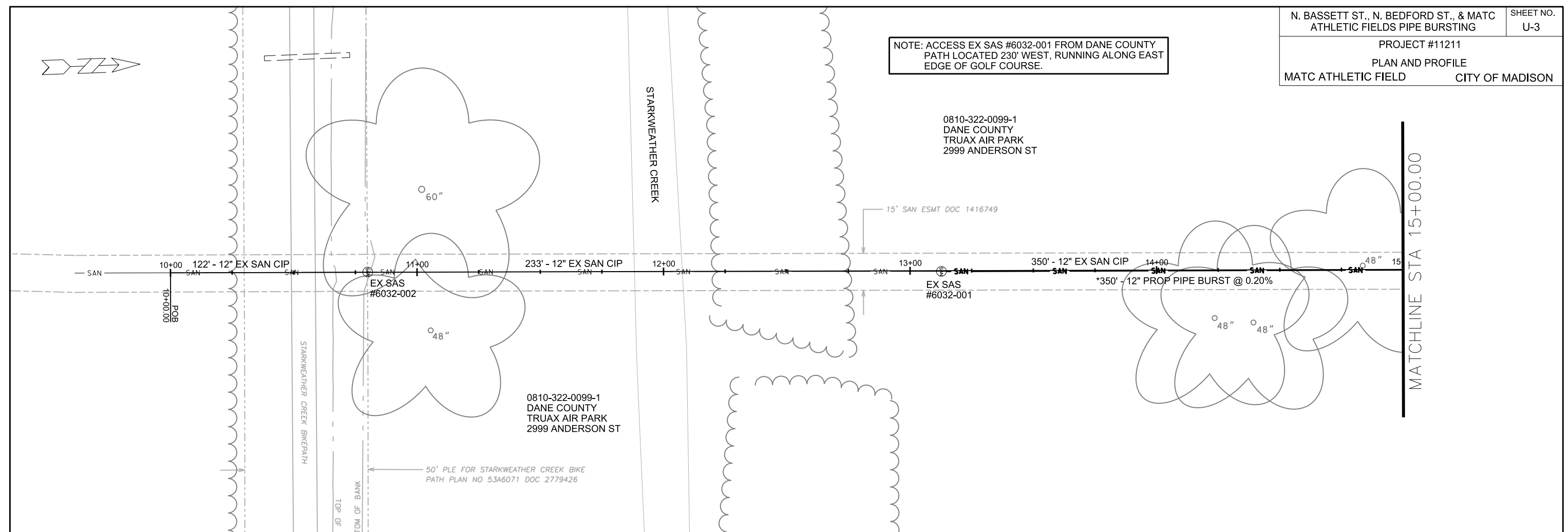
PLOT SCALE:

PLOT NAME:

REV. DATE:

ORIGINATOR: CITY OF MADISON, STREETS DIVISION

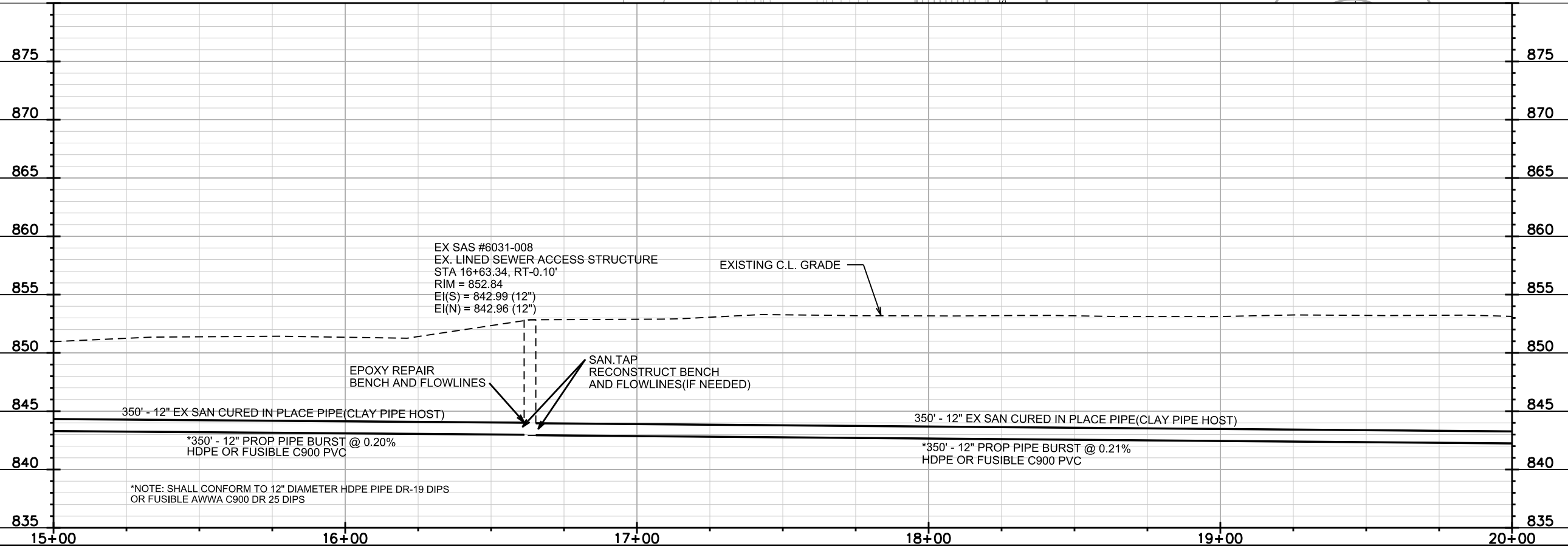
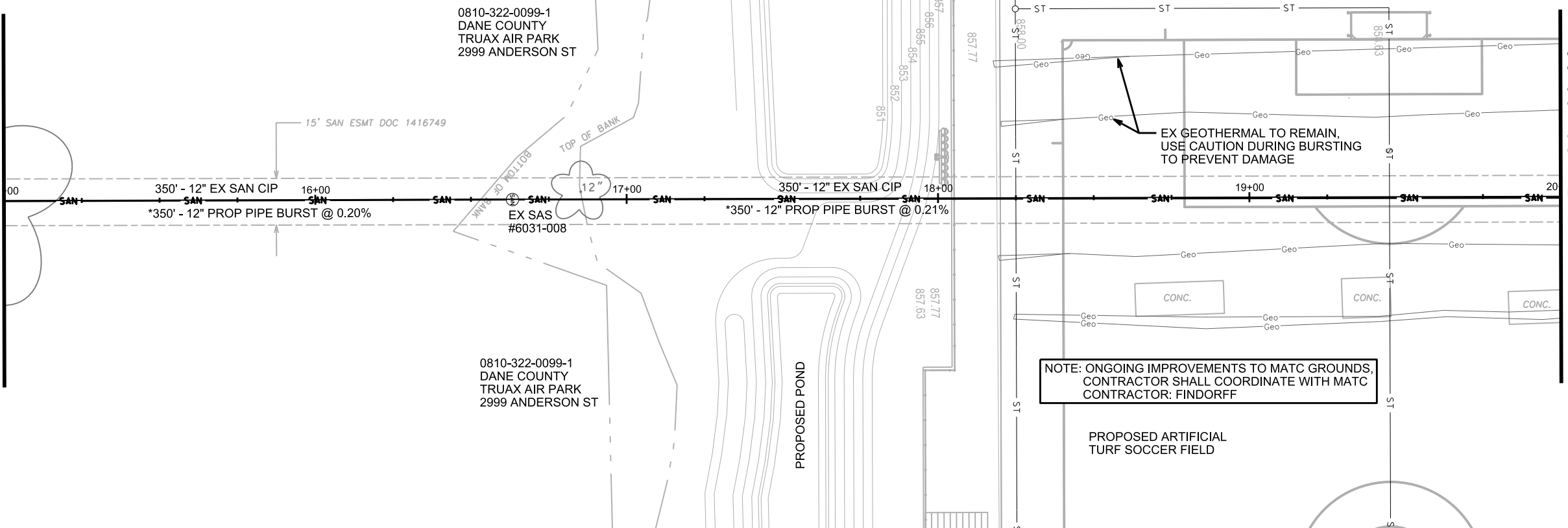
NOTE: ACCESS EX SAS #6032-001 FROM DANE COUNTY PATH LOCATED 230' WEST, RUNNING ALONG EAST EDGE OF GOLF COURSE.





MATCHLINE STA 15+00.00

MATCHLINE STA 20+00.00

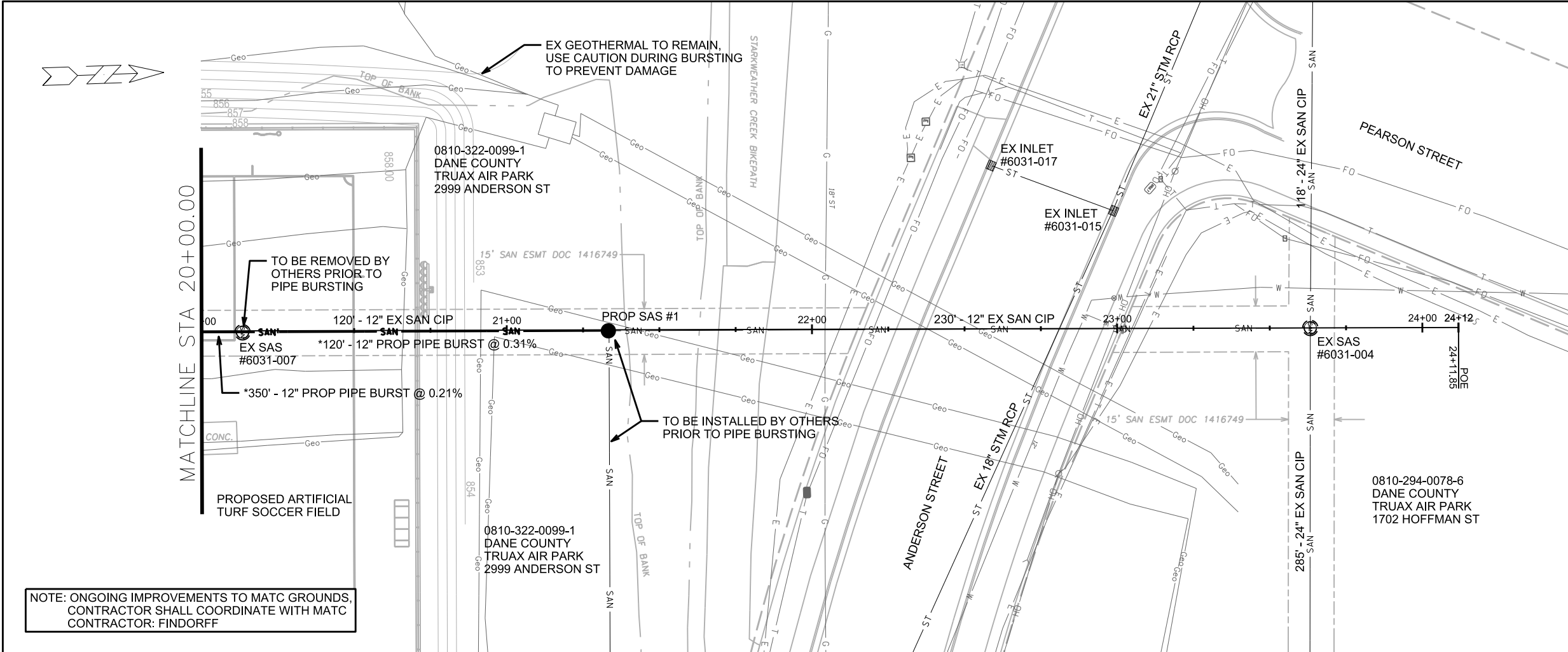


PLOT SCALE:

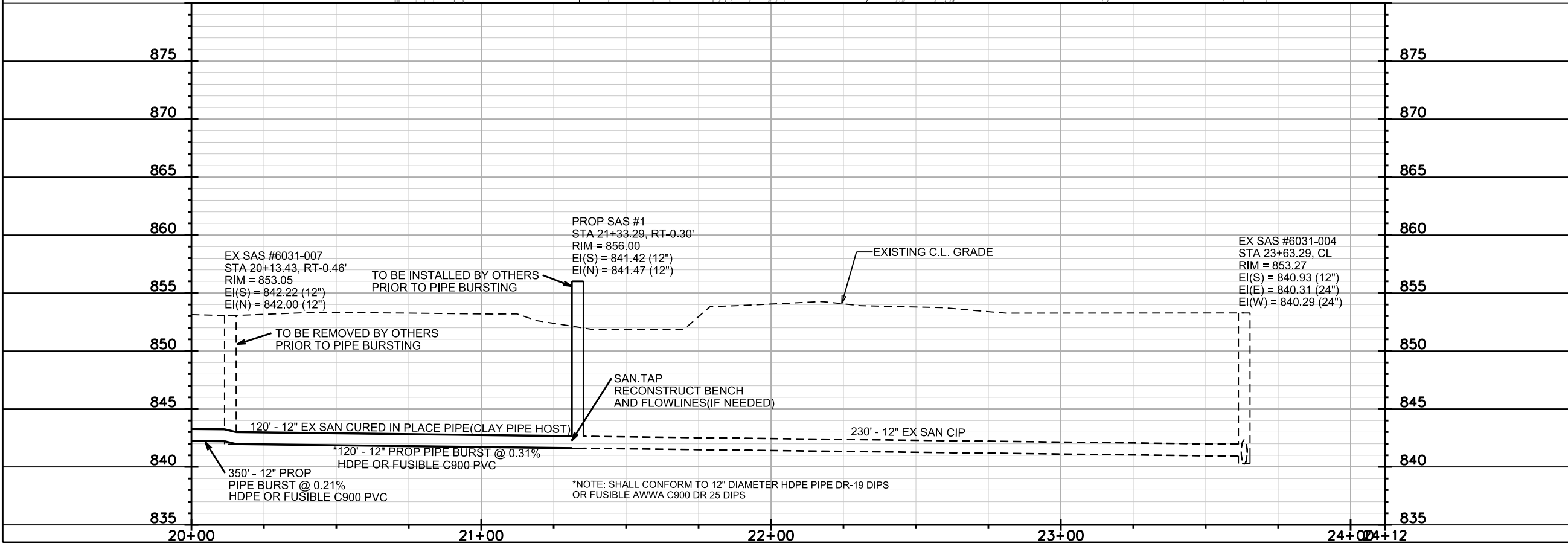
PLOT NAME:

REV. DATE:

ORIGINATOR: CITY OF MADISON, STREETS DIVISION



NOTE: ONGOING IMPROVEMENTS TO MATC GROUNDS, CONTRACTOR SHALL COORDINATE WITH MATC CONTRACTOR: FINDORFF



*NOTE: SHALL CONFORM TO 12\"/>

PLOT SCALE:

PLOT NAME:

REV. DATE:

ORIGINATOR: CITY OF MADISON, STREETS DIVISION